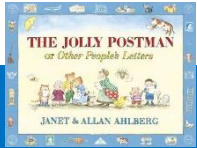


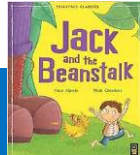


Welcome to Reception!

We hope that you all had an enjoyable and relaxing summer break and are looking forward to an exciting year in Reception full of learning opportunities. This half-term our topic will be 'Traditional Tales' which as well as being the focus for Literacy, will link to our learning across the curriculum. We cannot wait to work alongside you and your children this year. Miss Ablitt and Miss Osborne.



LITERACY



This half-term in Literacy, we will be exploring various Traditional Tales and linking these to the story 'The Jolly Postman'. The children will be developing their comprehension skills as well as questioning and role play. We will also begin our phonics learning, starting with recognising sounds from Phase 2 in Little Wandle. We will then apply these to read and write CVC words.

UNDERSTANDING OF THE WORLD

Our focus this term will be celebrating the similarities and differences between children in the class and discussing how we are all unique. We will discuss different cultures and share our own experiences, linking to Black History Month.

We will also use our senses to explore Forest School during our weekly sessions looking for changes within weather and seasons.

Personal, Social Development

Horn Park follows a 'values-based education'. Throughout the half term we will spend time embedding these within our setting.

Our school values are: respect, positivity, unity, honesty, perseverance and kindness.

MATHS

In maths, we will be building on our counting skills and number recognition. We will ensure that we have a deep understanding of numbers to 5 including the composition of each number, number bonds and subitising.

We will also explore patterns within numbers to 5 and 2D shapes.

PHYSICAL DEVELOPMENT

This half term we will be developing our co-ordination and movements by playing different games in our PE lessons as well as in the outside area. This will include dressing ourselves independently.

We will also build on our fine motor skills with the use of small equipment and play dough to strengthen our pincer grip for writing.

CLASS NOTICES

Our forest school day is normally a **Friday** and book change days are: **Mondays and Thursdays**

Children will need their PE kits in school each week, please bring this in on Mondays. black/navy shorts or joggers, a white t-shirt and plimsolls/trainers

Key dates –

24th September 9-9.30am – Stay and play

9th October 3.30-5pm - International Evening

15th October 9-10am – Phonics workshop

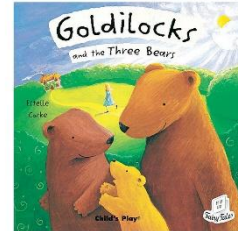
HOME LEARNING

To support your child's understanding and learning, here are some simple ideas for you to try at home that link to our key targets and topics. Over the next half term, could you...

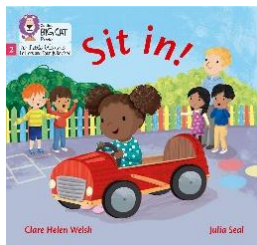
Watch number blocks at home and look out for numbers to 1-5.



Draw your favourite characters from the Traditional Tales that we have learnt in class. You could even make a story map.



Read every day and use your sound mat to help you.



Practice getting yourself ready for school independently.



- Numberblocks - <https://www.bbc.co.uk/iplayer/episodes/b08bzfnh/numberblocks>
- Alphablocks - [Alphablocks - BBC iPlayer](#)
- Head to the Little Wandle parents area for tips - [For parents | Letters and Sounds \(littlewandlelettersandsounds.org.uk\)](#)

Grapheme and mnemonic	Picture card
s s	snake
a a	astronaut
t t	tiger
p p	penguin
i i	iguana
n n	net
m m	mouse

Grapheme and mnemonic	Picture card
d d	duck
g g	goat
o o	octopus
c c	car
k k	kite
ck ck	sock
e e	elephant